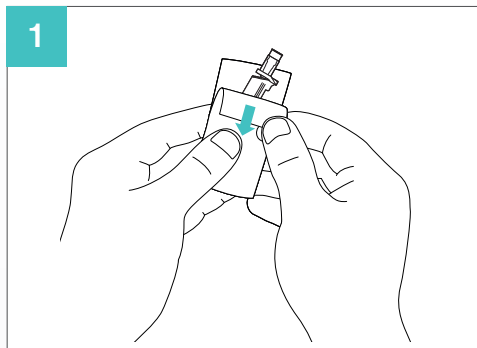
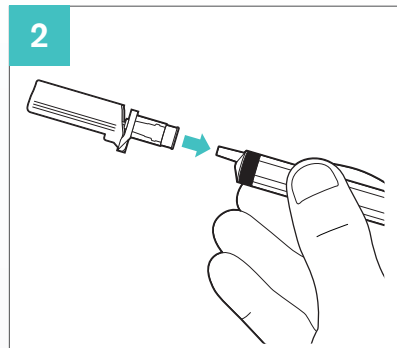


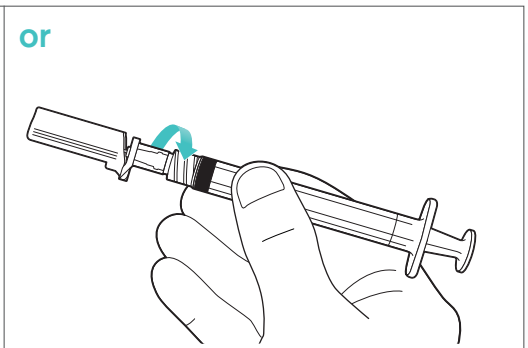
Instructions For Use



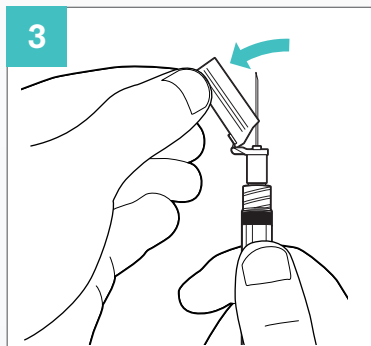
1
Peel open the blister pack and remove the K4 device.



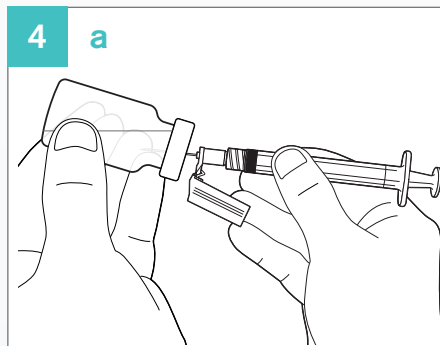
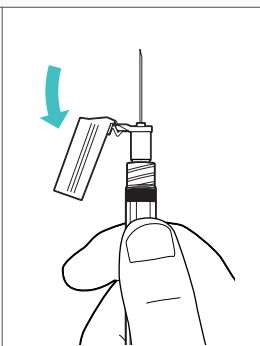
2
Push the K4 device onto a standard **luer slip** connector.



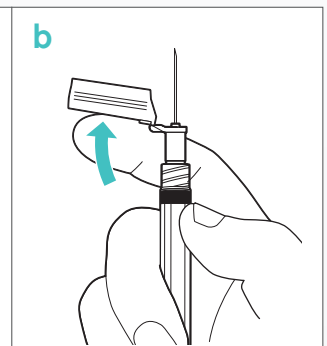
or
Screw the K4 device onto a standard **luer lock** connection.



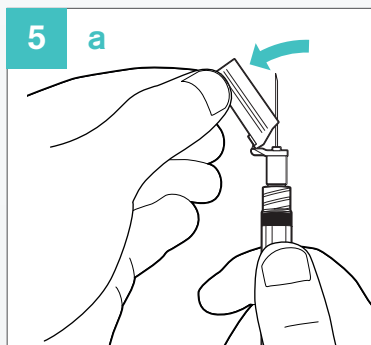
3
Pull back the hinged cover to expose the needle.



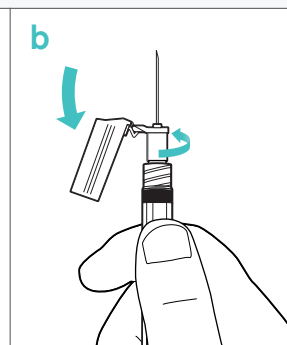
4 a
Fill the syringe with medication.



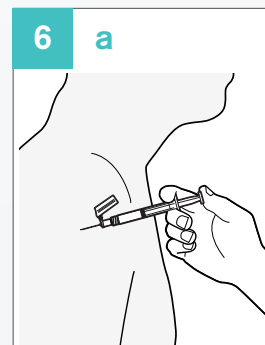
b
Close the needle cover to transport the needle safely.



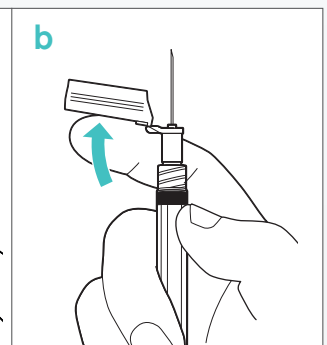
5 a
Prior to the injection, open the needle cover.



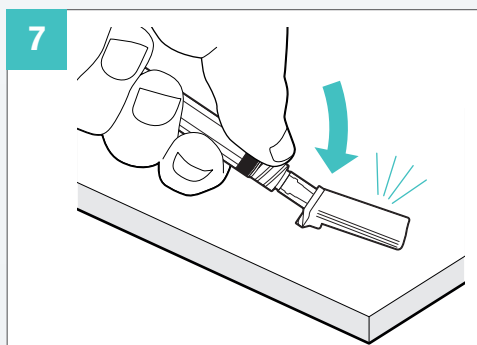
b
The needle cover can be rotated for ease of use.



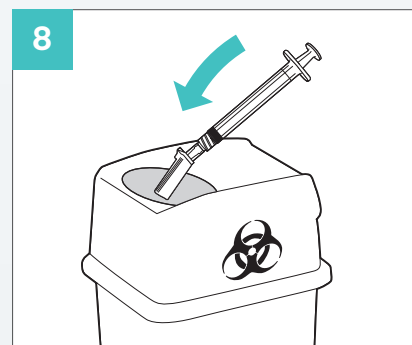
6 a
Administer the injection.



b
Close the needle cover immediately after use.



7
To activate the locking mechanism press the needle cover against a hard surface. You will hear a 'click' when the needle cover is locked.



8
Dispose of the used syringe into a sharps container.



STAR SYRINGE 
ONE INJECTION - ONE SYRINGE

+44 (0)1825 713888 • info@starsyringe.com • www.starsyringe.com
Star Syringe Limited, 3rd Floor, 17 Carlton House Terrace, London, SW1Y 5AH